



LAUSD
UNIFIED

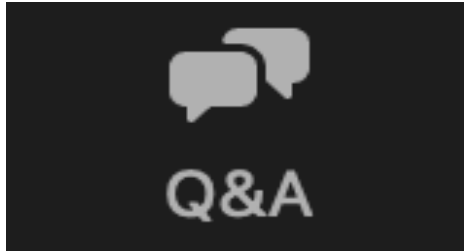
Palisades Charter Elementary School Reconstruction Project

Community Meeting
July 24, 2025

Agenda

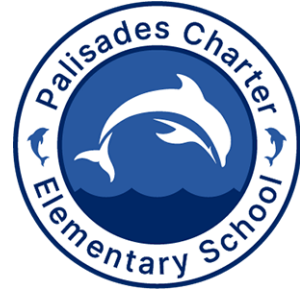
- I. WELCOME & MEETING LOGISTICS
 - LORENA PADILLA-MELENDEZ, DIRECTOR, COMMUNITY RELATIONS, LAUSD
- II. PROGRESS UPDATE OF ENVIRONMENTAL WORK
 - CARLOS TORRES, DIRECTOR, OFFICE OF ENVIRONMENTAL HEALTH & SAFETY, LAUSD
- III. PROPOSED PROJECT
 - TIMOTHY SPAETH, SENIOR PROJECT DEVELOPMENT MANAGER, ASSET MANAGEMENT, PLANNING & DESIGN, LAUSD
- IV. DESIGN PROGRESS
 - GREG KOCHANOWSKI, DESIGN PRINCIPAL, PRACTICE
- V. QUESTIONS, COMMENTS & COMMUNITY ENGAGEMENT NEXT STEPS

Zoom Webinar — Submit questions and/or comments



To ask a question or provide a comment, please use the “Q&A” icon and submit it at any time during the meeting.

OEHS Updates



Status of Environmental Work

1. ☒ USACE Household Hazardous Waste Removal (Phase 1)
2. ☒ USACE Debris Removal (Phase 2)
 - Includes site assessment and removal of any asbestos, debris (i.e. concrete, metal, ash), and surface soils (top 3-6 inches)
3. ☒ Third-Party Contractor – Debris Removal
4. ☒ Third-Party Contractor – Environmental Assessment of Soils
5. ☐ Third-Party Contractor – Comprehensive Environmental Assessment and Cleanup of Building Interiors

OEHS Updates

Materials Tested and Analyses

Soil

- Volatile Organic Compounds (VOCs)
- Total Petroleum Hydrocarbons
- Polycyclic Aromatic Hydrocarbons (PAHs)
- Title 22 Metals, including mercury
- Organochlorine Pesticides
- Polychlorinated Biphenyls (PCBs)
- Dioxins and Furans
- Asbestos

Air

- Asbestos
- Fire-related VOCs
- Metals

Surfaces (via wipes)

- Title 22 metals, including mercury
- PAHs
- Dioxins and Furans

OEHS Updates

Safety Measures When Students Return

Continued Environmental Monitoring

LA Unified Know Your Air Network Improvements

Enhanced air quality monitoring (PM2.5, PM10, NO2, and weather data) in real time with online public access

Installation at 21 schools impacted by or near reconstruction zones is scheduled for August 2025. Five high-priority schools will be equipped with multiple monitoring locations.

Will provide site-specific decision-making information during cleanup and reconstruction



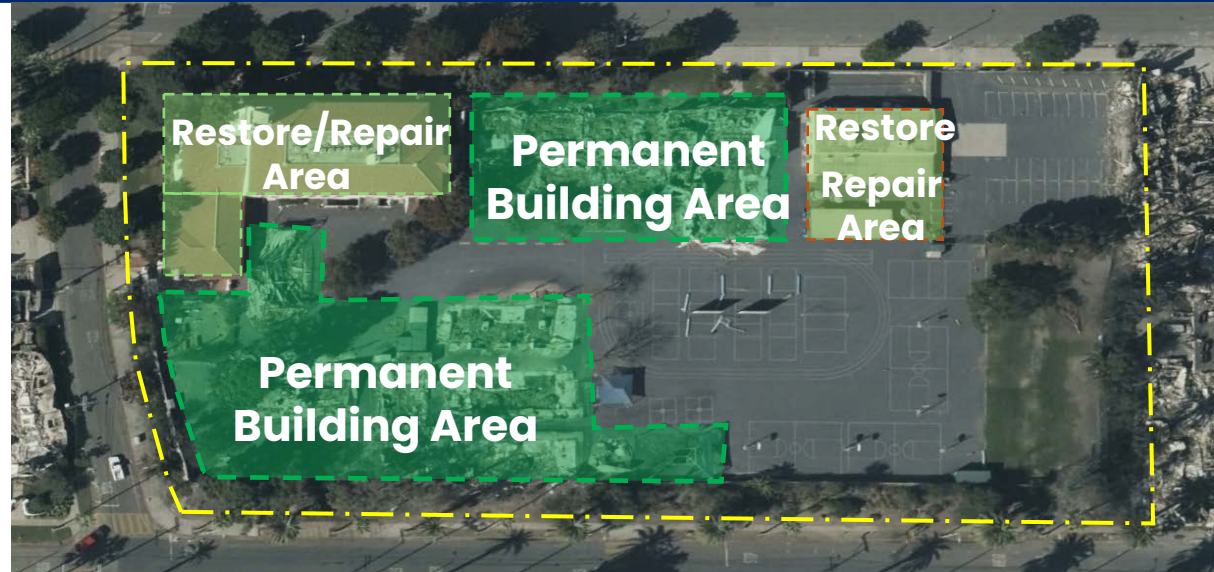
Campus Reconstruction Project Summary

- The January 2025 Palisades Fire caused an unprecedented loss of facilities due to fire damage, with significant impacts to Marquez Charter Elementary School, Palisades Charter Elementary School, and Palisades Charter High School.
- The proposed Projects have been developed to expedite the repopulation of the affected schools.
- These Projects replace facilities that were destroyed at each school.
- Palisades Charter Elementary School & Marquez Charter Elementary School will be funded by the category of need for major modernizations, upgrades, and reconfiguration to school campuses.
- Board Approved June 3, 2025.

Palisades CES Proposed Project

Project Scope:

- Restore and repair intact buildings with upgrades for re-occupancy (equipment, systems, interiors)
- 16 new classrooms (general, TK/K, specialty), admin spaces, multipurpose room, and maintenance facilities
- Infrastructure renewal including utilities, landscape, and parking improvements



Total Project Budget ~\$134.9M

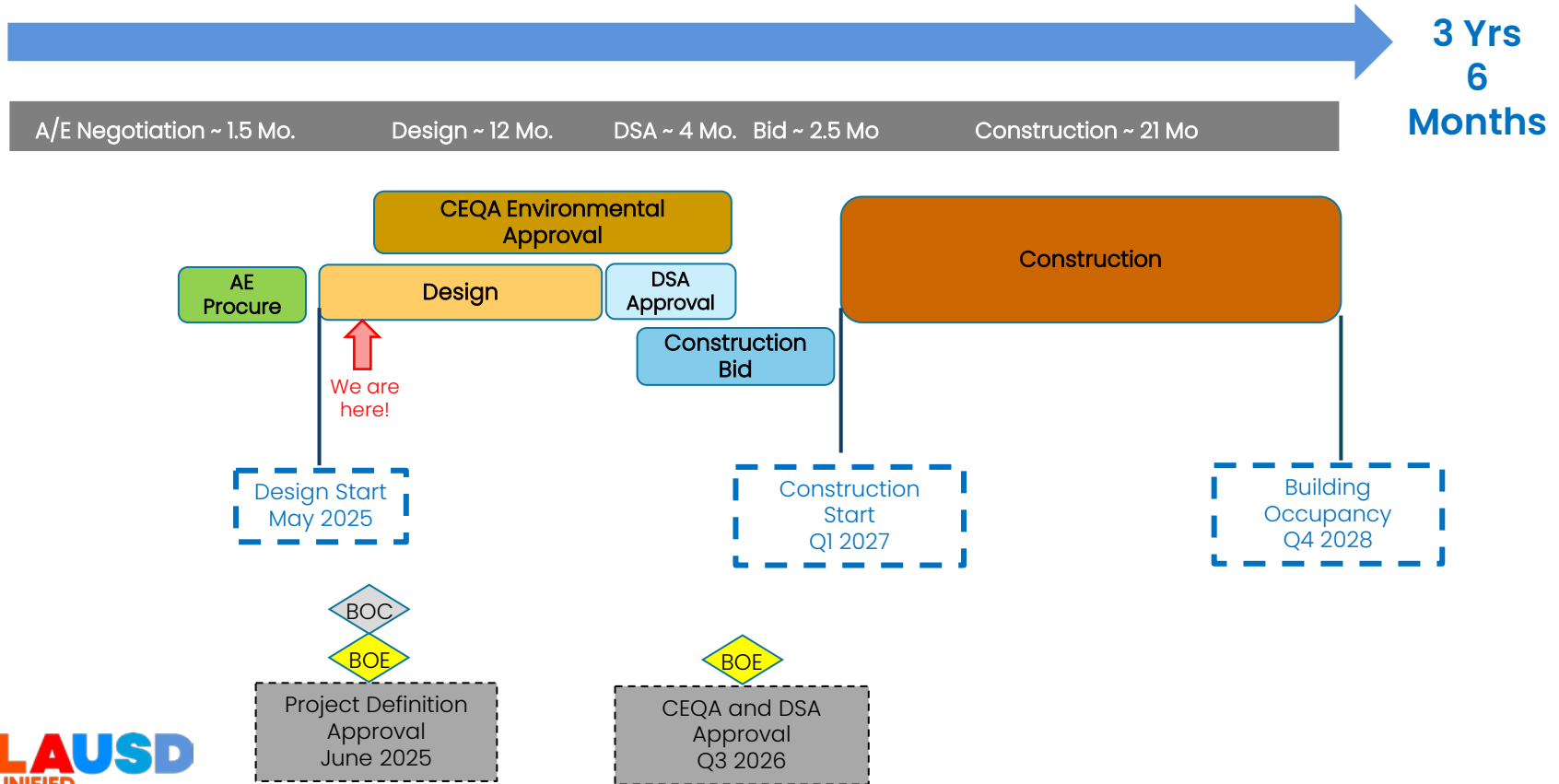
Anticipated Schedule

- | | |
|---|---------|
| • Restoration/Repair Construction Start | Q2 2025 |
| • New Building Construction Start | Q1 2027 |
| • Construction Complete | Q4 2028 |

Permanent Campus Program Overview

- New Classrooms
 - 9 General Classrooms (1st – 5th Grade)
 - 5 Kinder/TK
 - 2 Flexible Learning/Maker Space Classrooms
- Classroom Support Spaces
 - Collaboration Spaces, Teacher Workrooms, Storage, etc.
- 2 Resource Specialist (RSP) Rooms
- Multi-Purpose Room (~3,000 square feet)
- Lunch Shelter
- Outdoor Play Areas and Outdoor Learning Environments

Anticipated Reconstruction Timeline



12 – Month Design Milestones Overview

May 2025 – May 2026

Preliminary Schematic Design Phase: ~2 months: MAY – JUNE 2025

Initial Phase including continuing Due Diligence and Site Analysis, Programming, and development of initial design/massing options.

Community Meeting #1

Final Schematic Design Phase: ~2 months : IN PROGRESS

Development of site and floor plans, building massing, initial development of building engineering systems, and exterior environment for recommended Design Option including preliminary interior and exterior renderings.

Community Meeting #2

Design Development Phase: ~3 months :

Refinement of the Design with detailed plans, sections, elevations, and material and color selections. Development and Coordination of work by project engineers.

Community Meeting #3

50% Construction Document Phase: ~2.5 months :

Initial Construction Documentation development of plans, details, specifications as required for agency permitting and construction. Technical Reviews by LAUSD Staff to ensure compliance of design with LAUSD Standards.

100% Construction Document Phase: ~2.5 months

Final Construction Documentation development of plans, details, specifications as required for agency permitting and construction. Submittal to the Division of the State Architect (DSA) for Plan check Approvals at the Conclusion of this Phase.

Practice



Palisades Charter Elementary School Reconstruction

Los Angeles Unified School District

Design Update / Community Meeting 02

24 July 2025

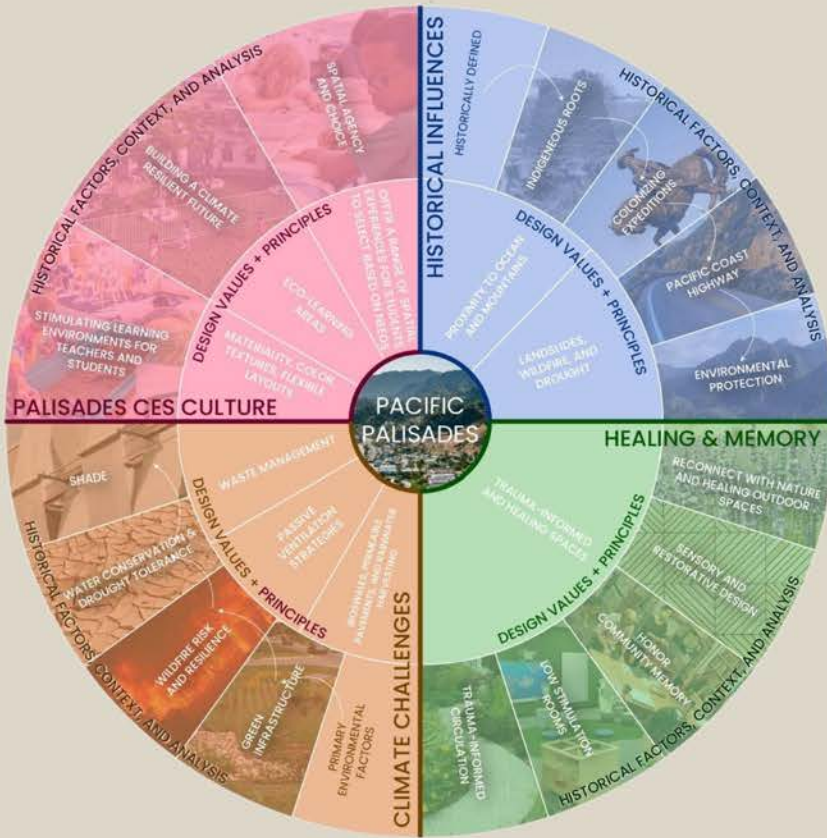
Guiding Principles

Establish a Framework Plan that Promotes Unity + Identity for Students, Teachers and Community.

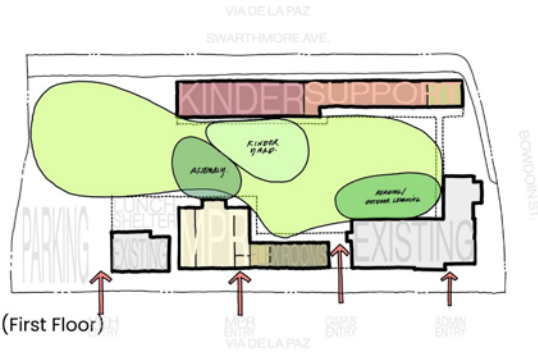
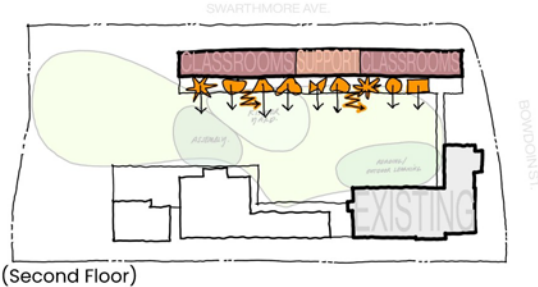
Create an Environment that Supports Healing and Collective Memory.

Utilize Holistic Design Practices to Create a Resilient Campus (environmental + cultural).

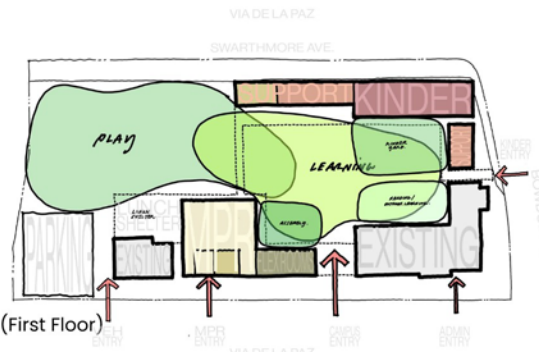
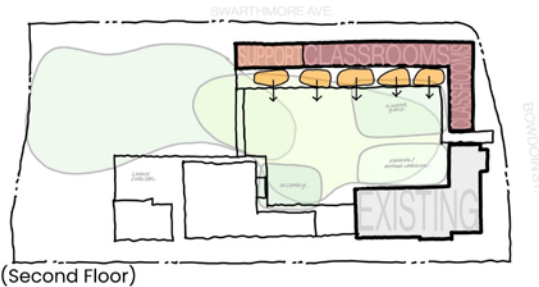
Harmonize the New Structures with the Existing Building.



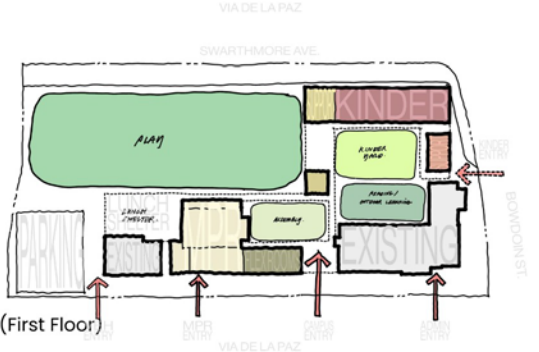
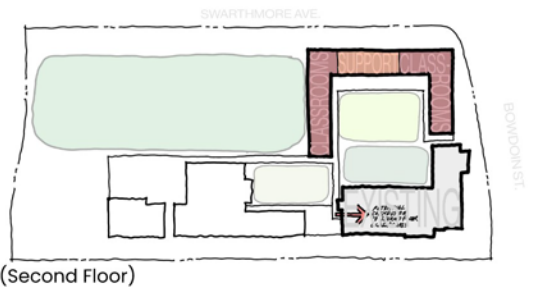
1 - Community Commons



2 - Interwoven Landscapes



3 - Garden Courts





Current Scheme: Interwoven Courtyards

What we heard...

Majority leaned toward Options 2 & 3

Scheme Qualities

- Multiple Scaled Outdoor Environments
- Kinder Yard separate from Main Play Yard
- Kinder Yard existing location maintained
- Strong sense of Place when entering campus
- Maintain Student Community Cohesion
- Respect of Historic Building fabric.



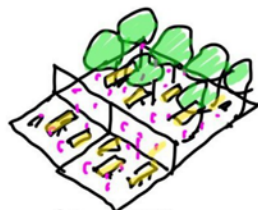
Community Entry



Social Hub



Kinder Entry



Innovation Court



**Assembly
Garden**



**Outdoor Learning &
Literature Garden**



Active Yard

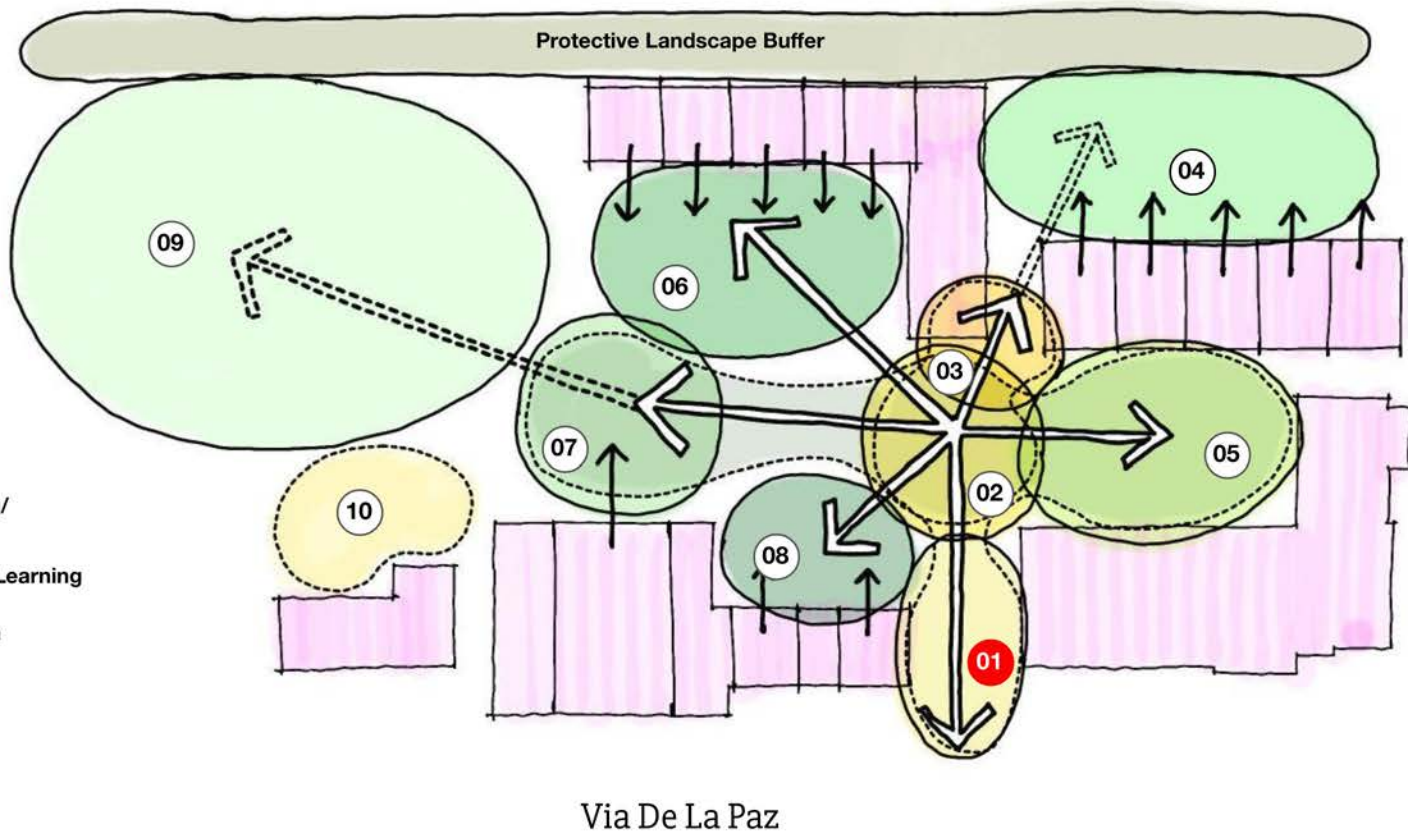


Eating and Socializing



**Active & Passive
Learning**

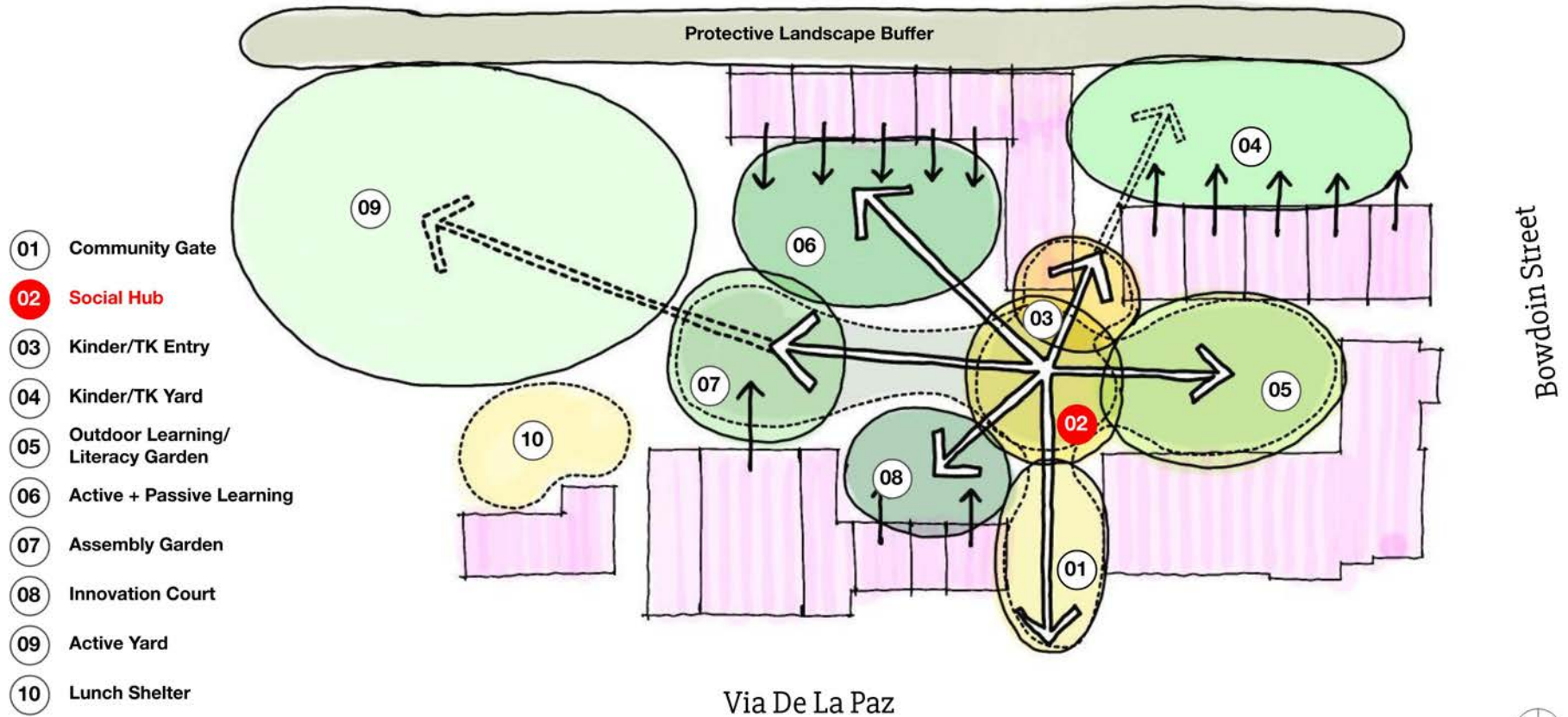
Interwoven Courtyards: Spaces for Learning, Play, and Connection



Bowdoin Street

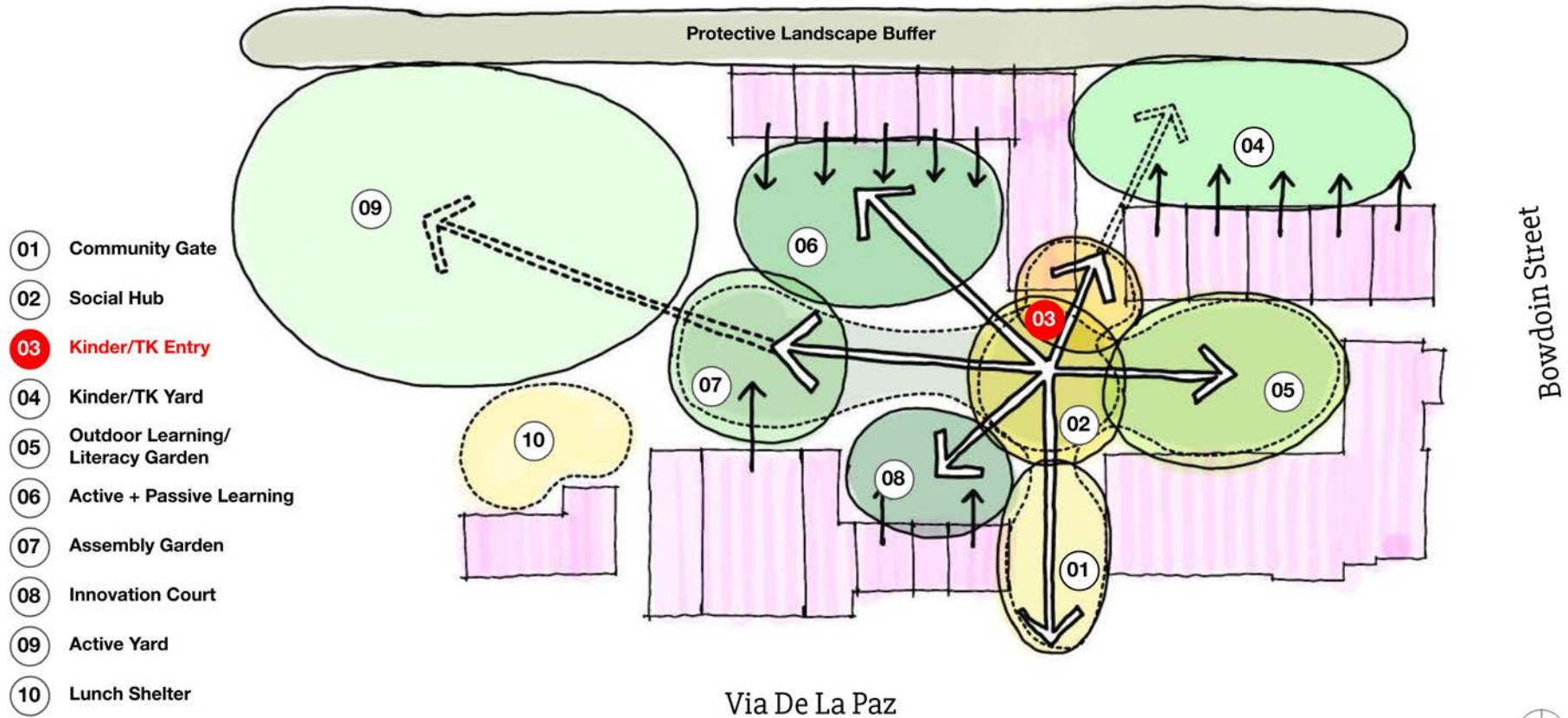
Via De La Paz

Practice HKI A  LAUSD
UNIFIED

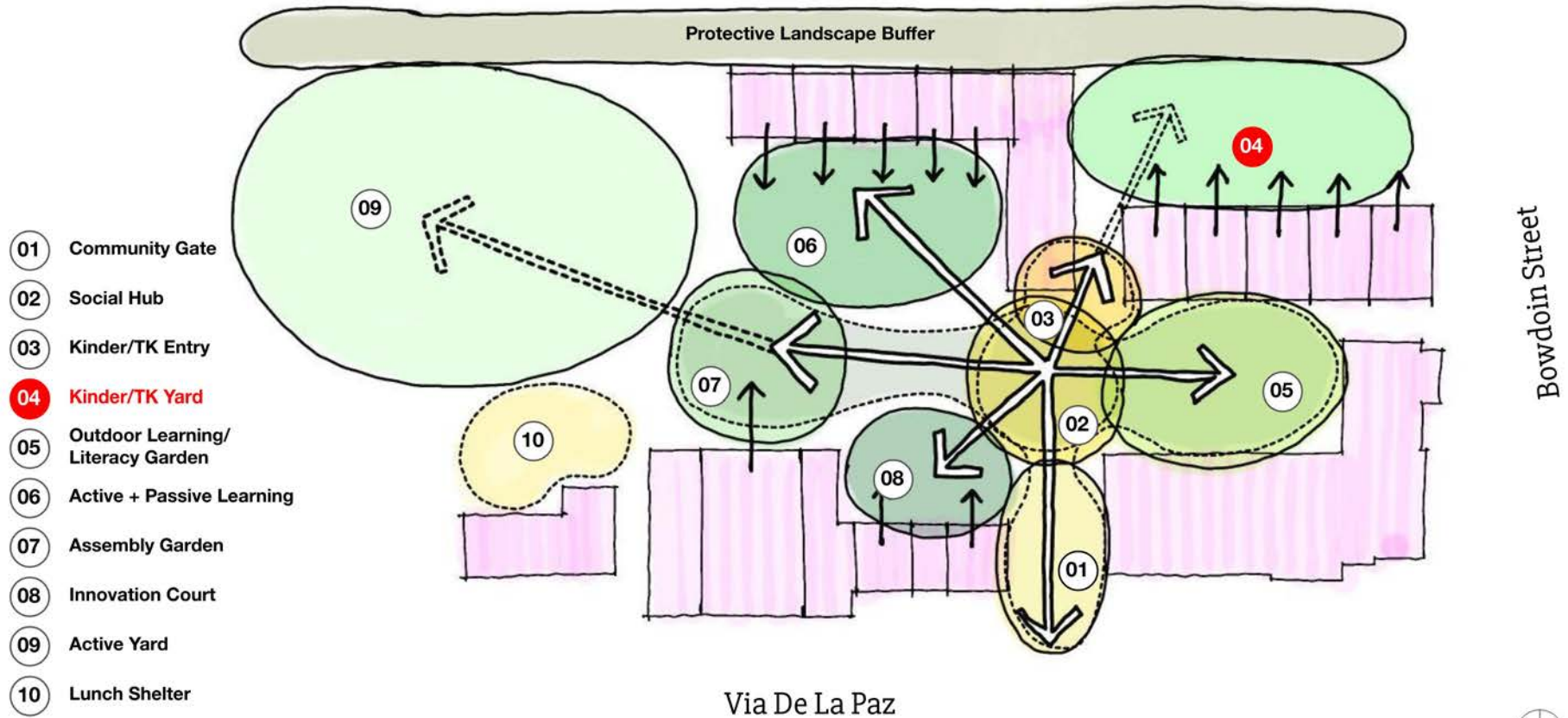


Interwoven Courtyards: Organizational Diagram

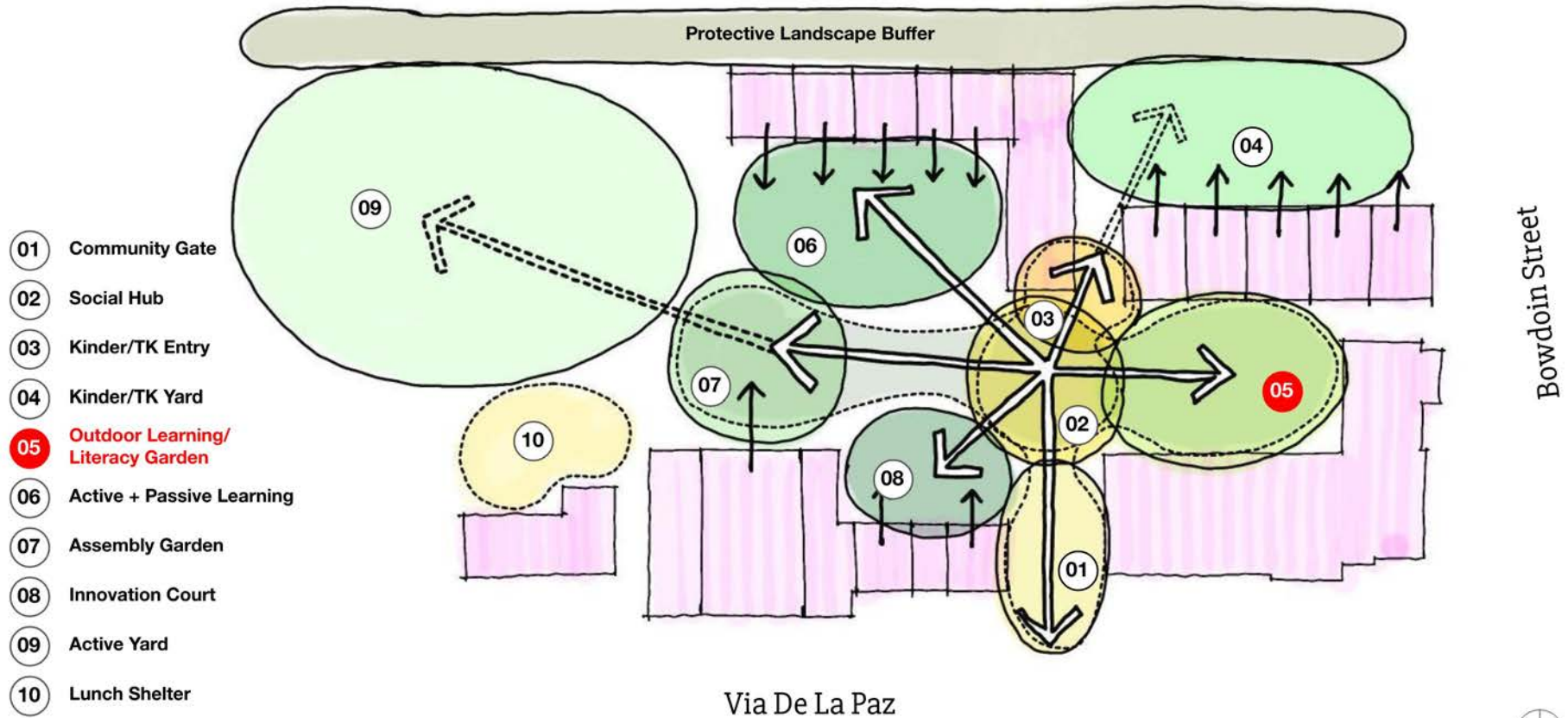
N. Swarthmore Avenue



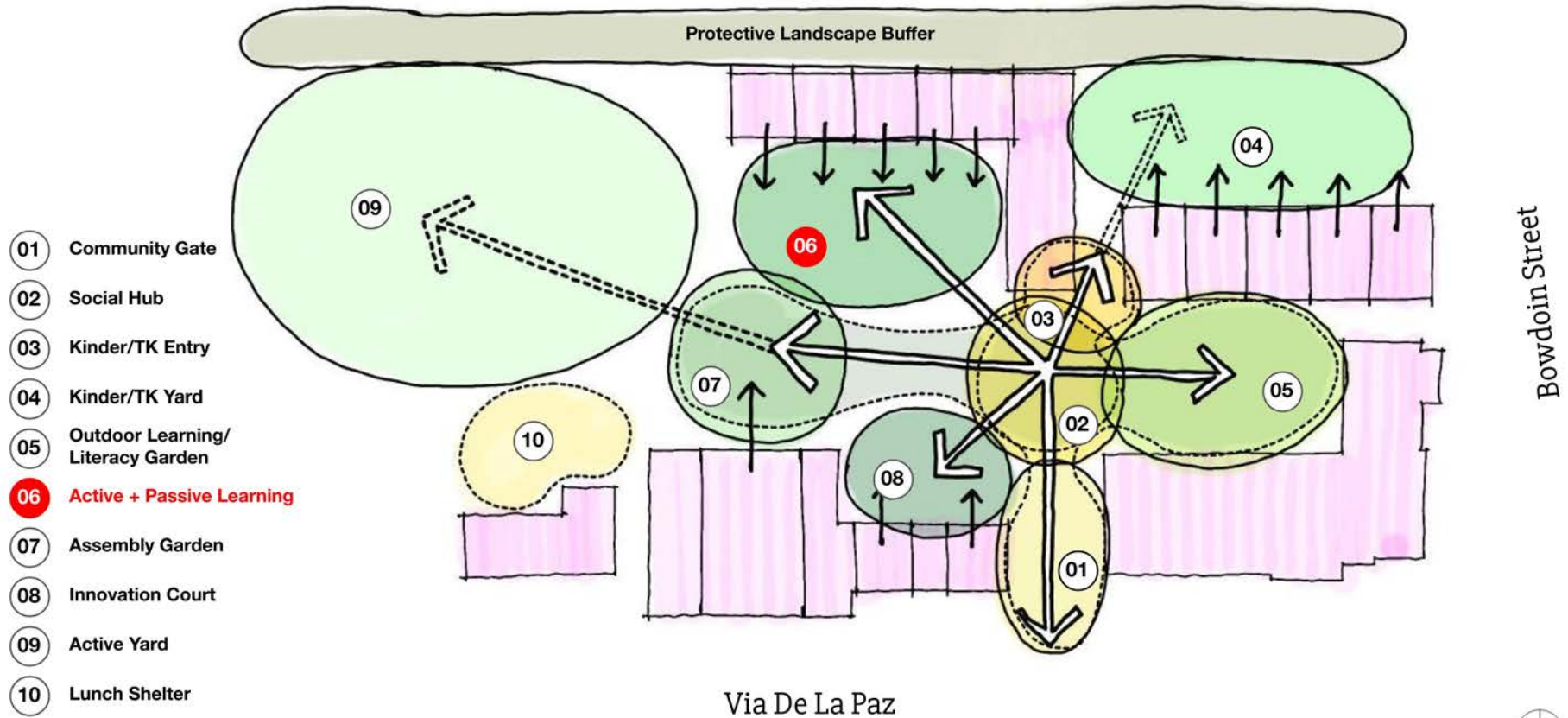
Interwoven Courtyards: Organizational Diagram



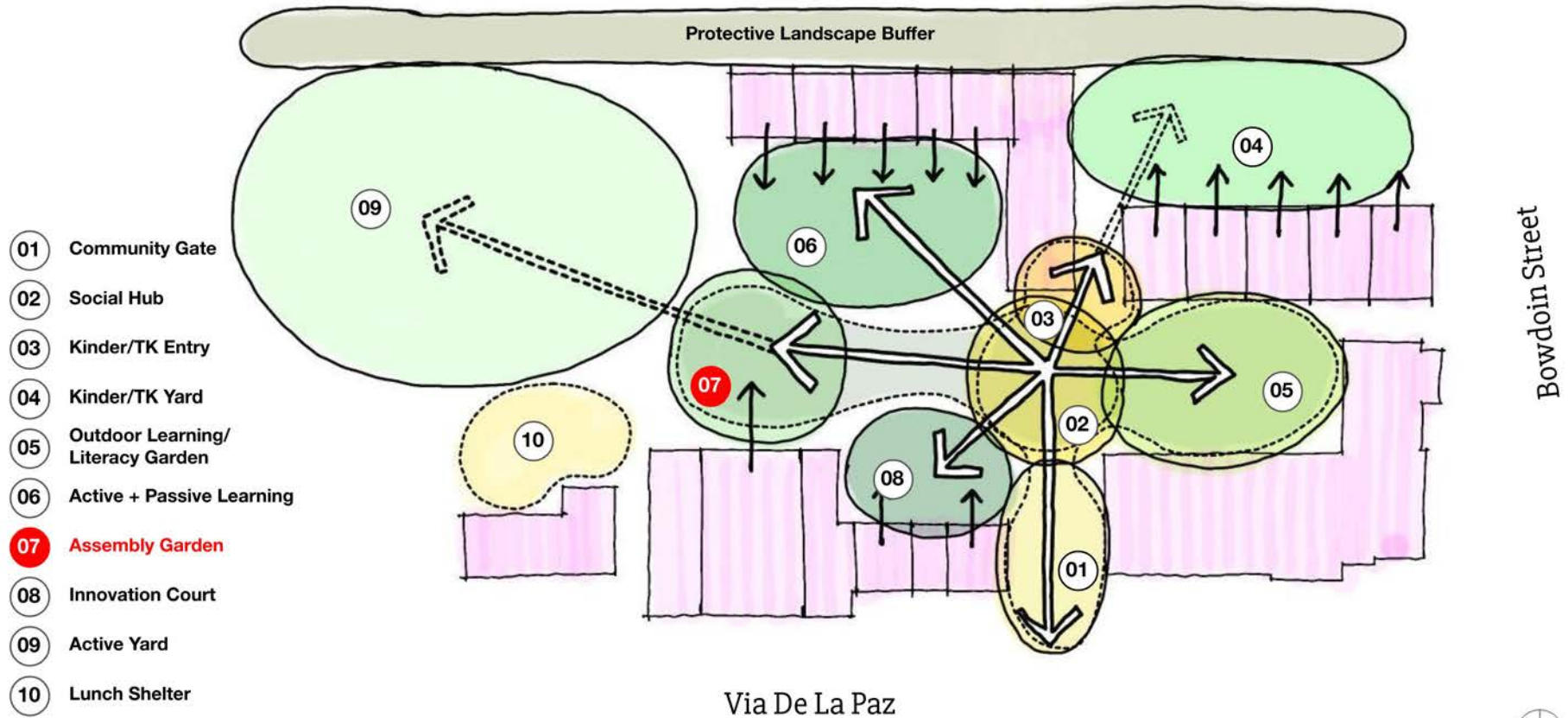
Interwoven Courtyards: Organizational Diagram



Interwoven Courtyards: Organizational Diagram

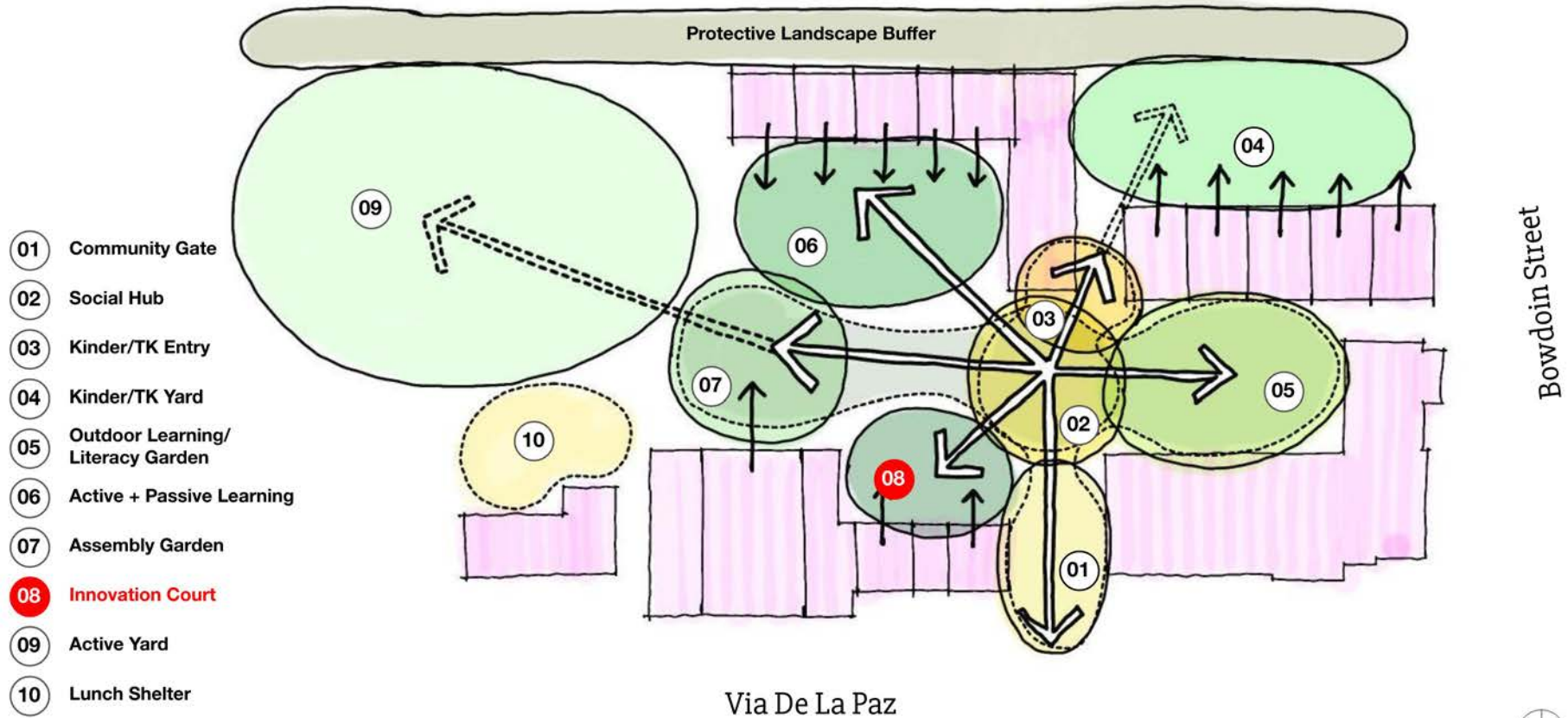


Interwoven Courtyards: Organizational Diagram

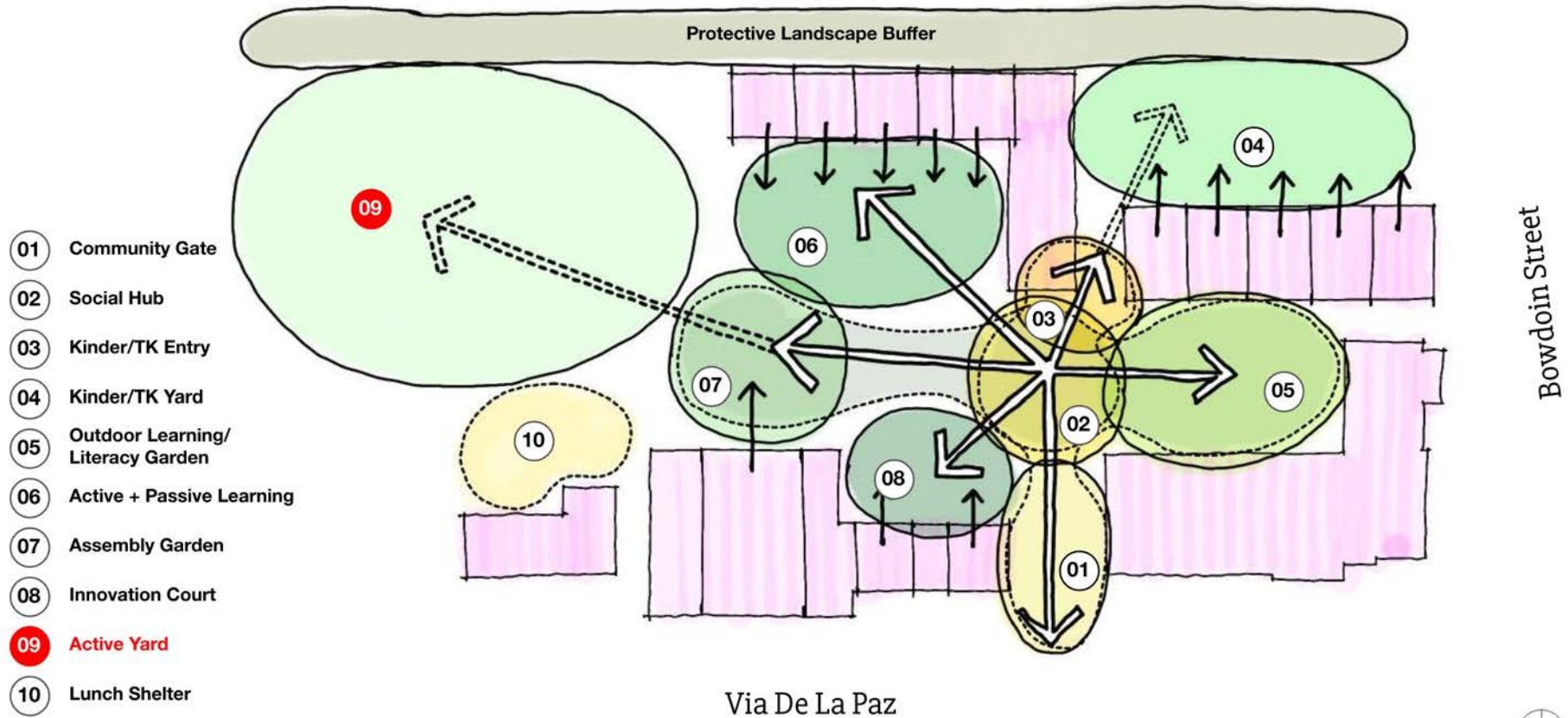


Interwoven Courtyards: Organizational Diagram

N. Swarthmore Avenue

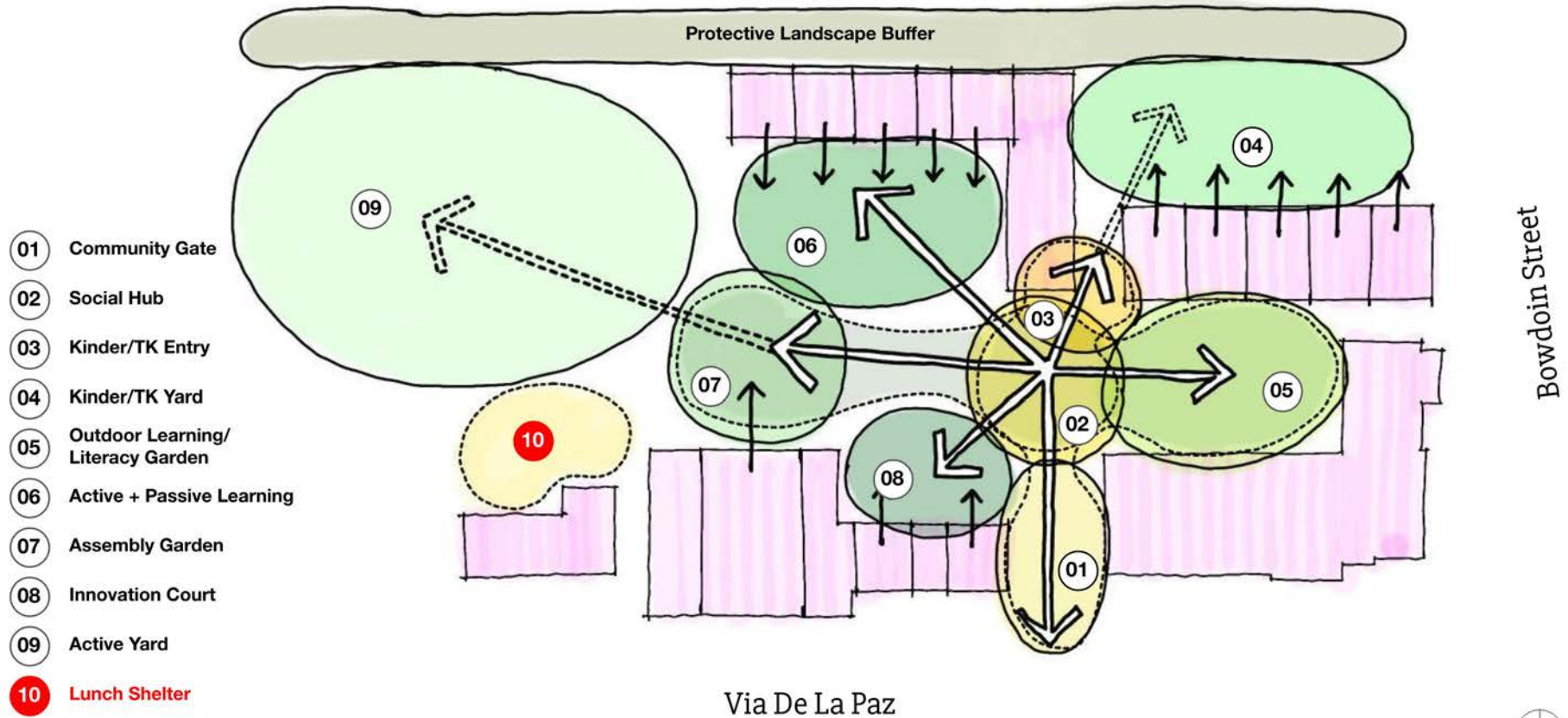


Interwoven Courtyards: Organizational Diagram



Interwoven Courtyards: Organizational Diagram

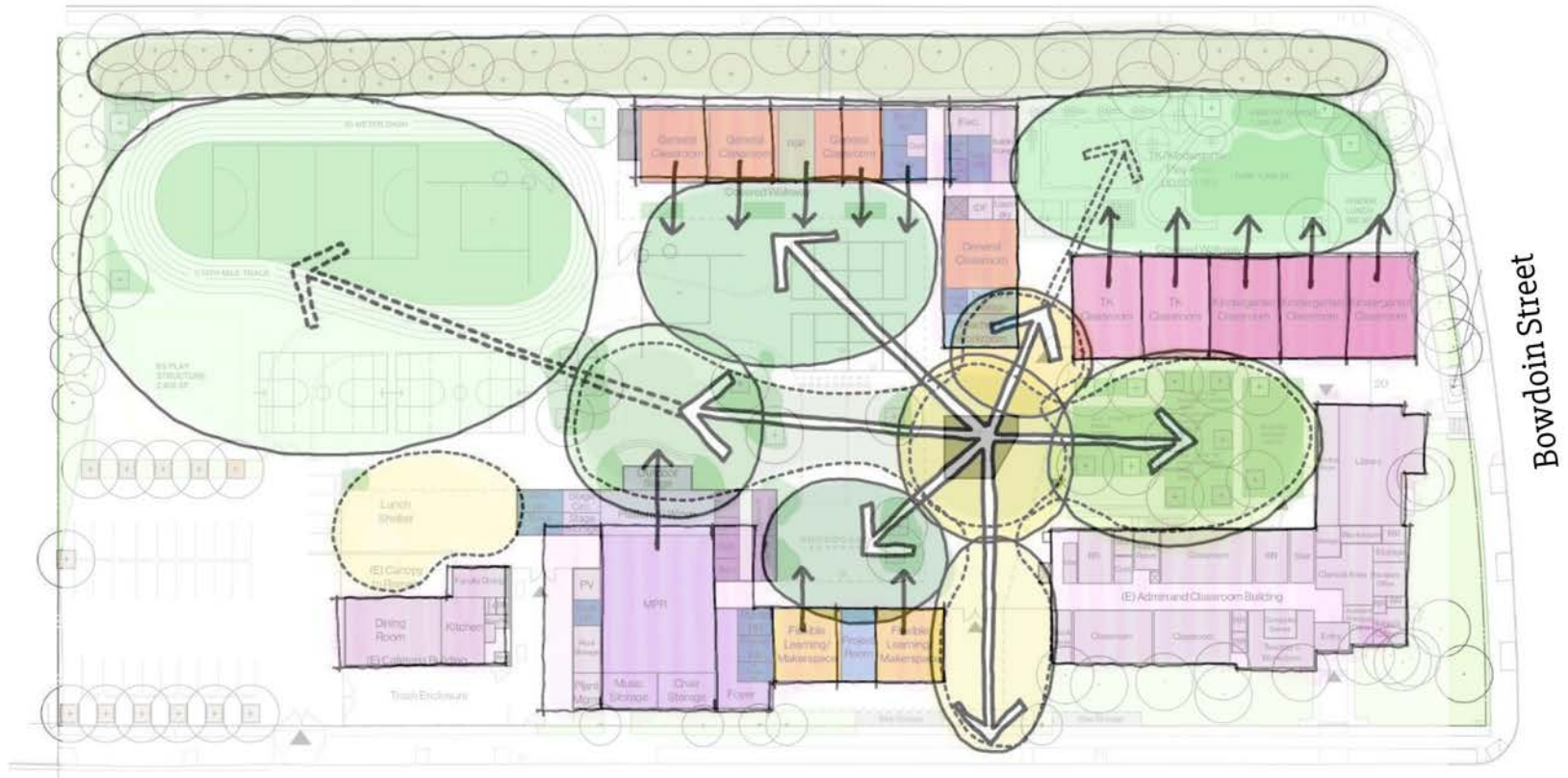




Interwoven Courtyards: Organizational Diagram



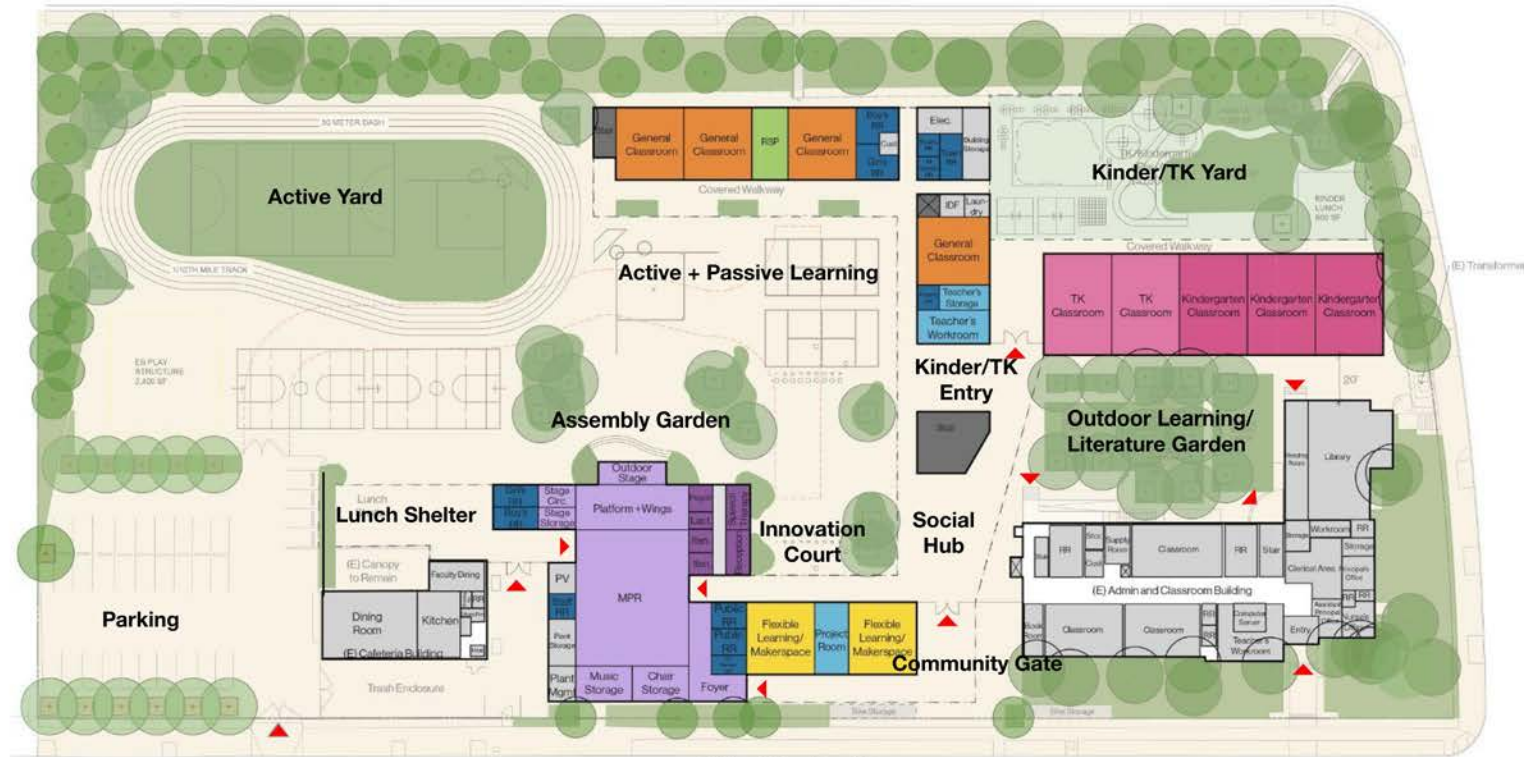
N. Swarthmore Avenue



Via De La Paz

Interwoven Courtyards: Organizational Diagram Overlay

N. Swarthmore Avenue



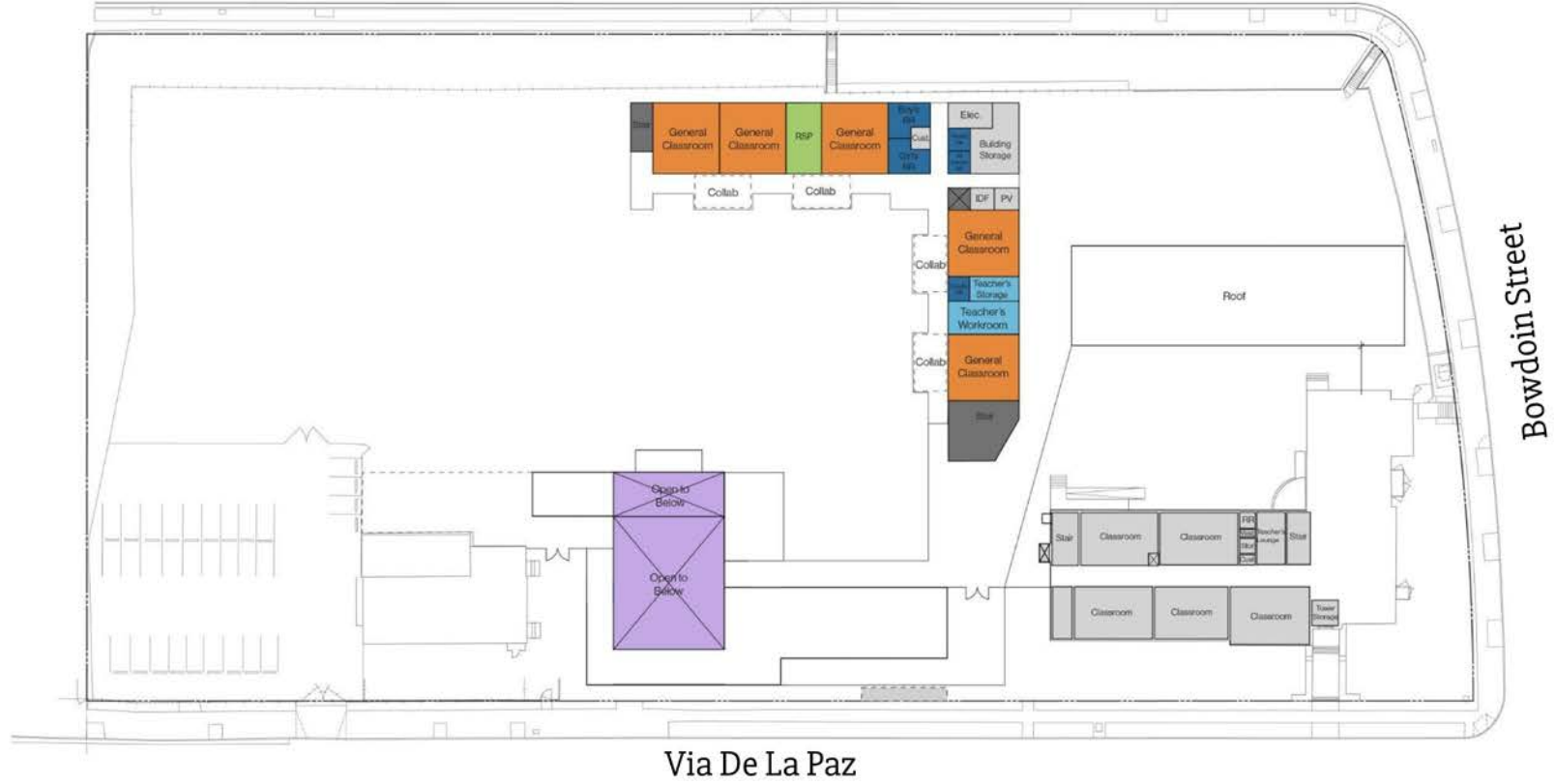
Via De La Paz

Bowdoin Street

Conceptual Ground Floor Plan



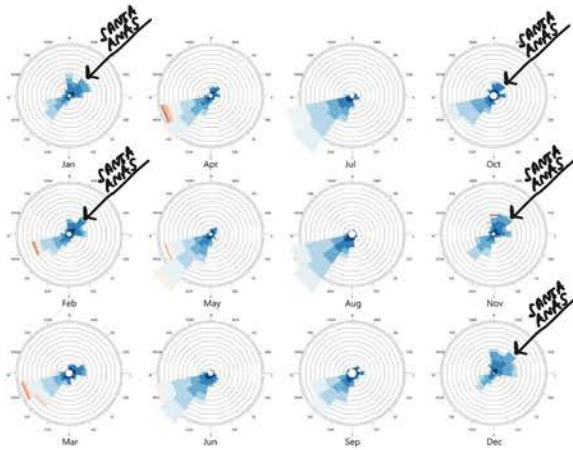
N. Swarthmore Avenue



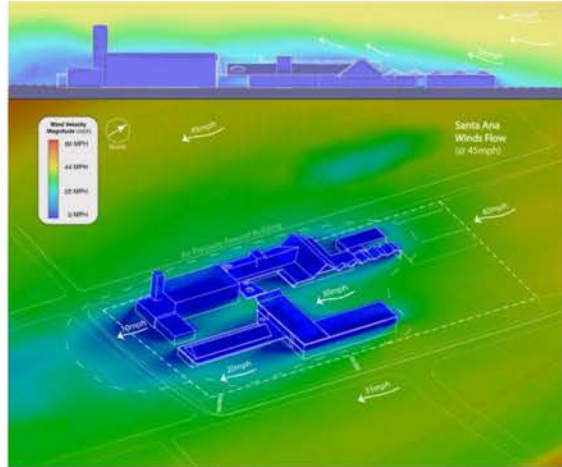
Conceptual Second Floor PLan



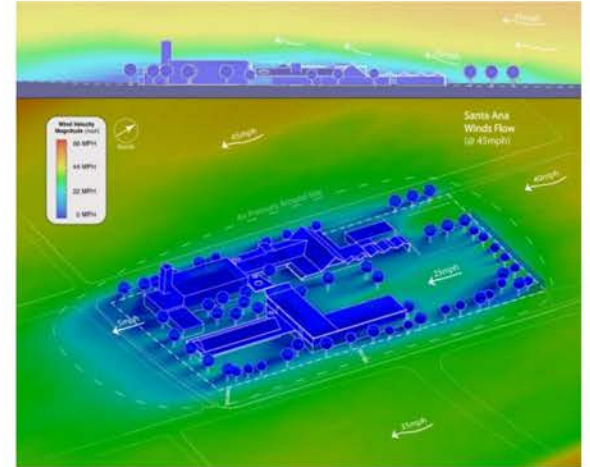
Climate Challenges



Wind Direction



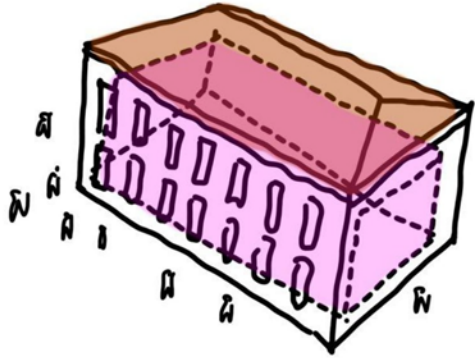
Building / Wind Analysis
Building Mass Only.



Building / Wind Analysis
Buildings With Tree Buffer



So.....what
might the
new campus
look like?



EXISTING SCHOOL

- EXTERIOR EXPRESSION DISGUISES INTERIOR LIFE OF THE SCHOOL.
- BUILDING AS OBJECT

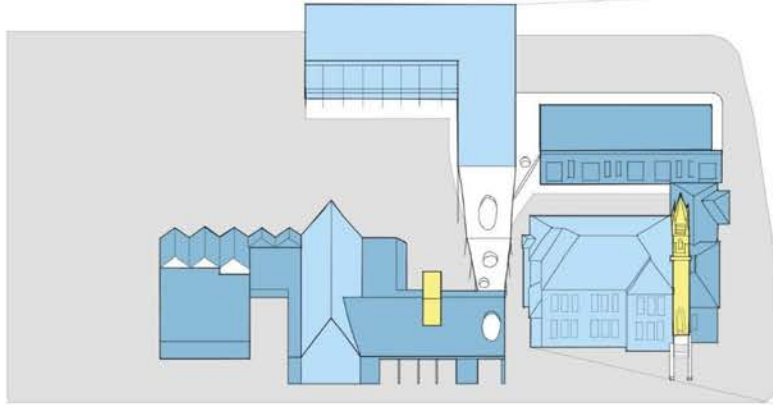


PROPOSED APPROACH.

- MISSION STYLE "WHITE SHELL" IS PEELD BACK TO REVEAL LIFE + ACTIVITIES OF SCHOOL
- BUILDING AS THRESHOLD + INTERFACE.



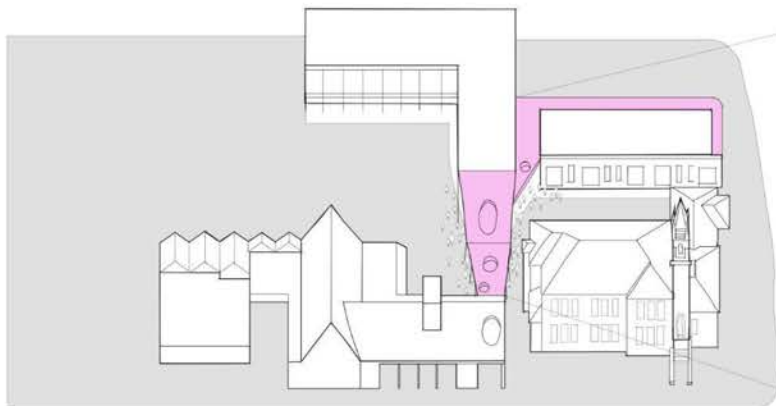
Historical Influences



Varied Massing & Scale



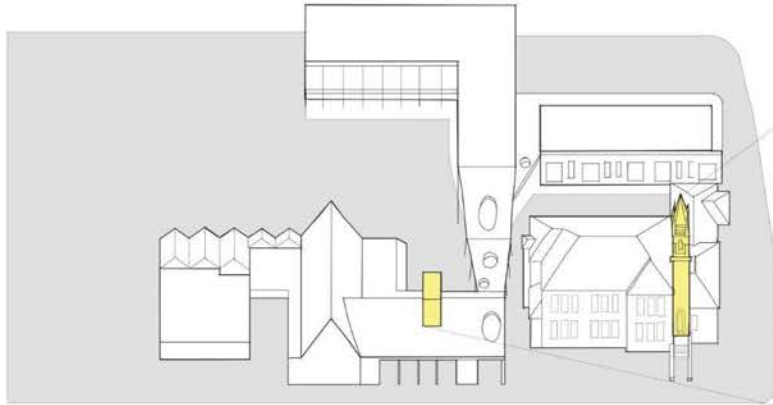
Historical Influences



Porches



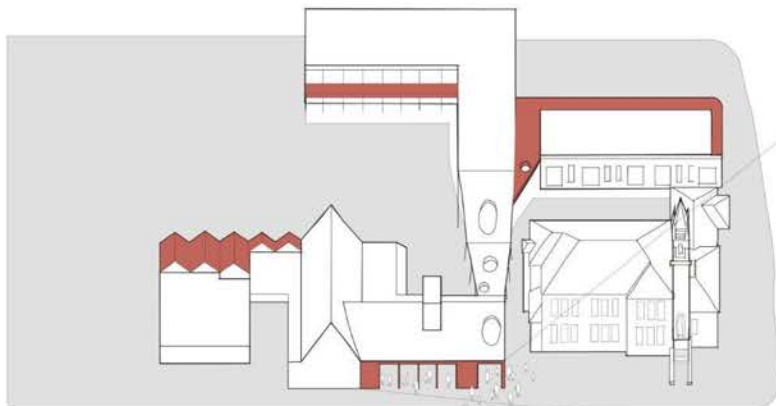
Historical Influences



Decorative Tile & Murals



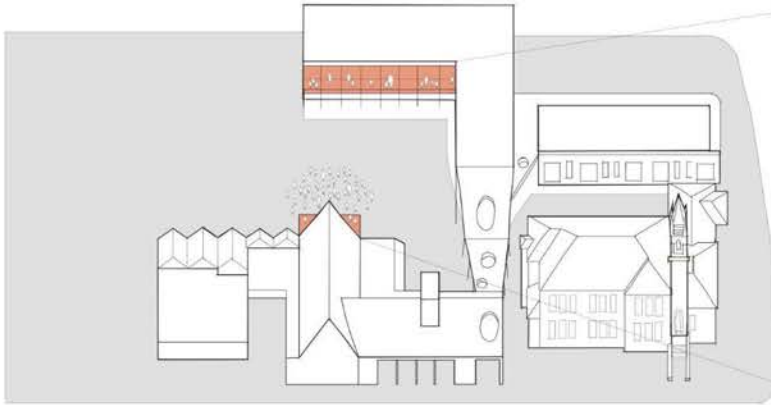
Historical Influences



Arcades & Loggias



Historical Influences



Elevated Walkways & Stages



Outdoor Learning



Covered Circulation



Outdoor Connection



Defined Exterior Spaces



Social Stair



Connected Collaboration Areas



Expressive Roofs

Precedents - Spatial and Architectural Character



Aerial View over Campus



Elevation View along Via De La Paz



View of New Entry along Via De La Paz



View of Social Hub and Adjacent Play Yard (2-Story Classroom Building in the distance)

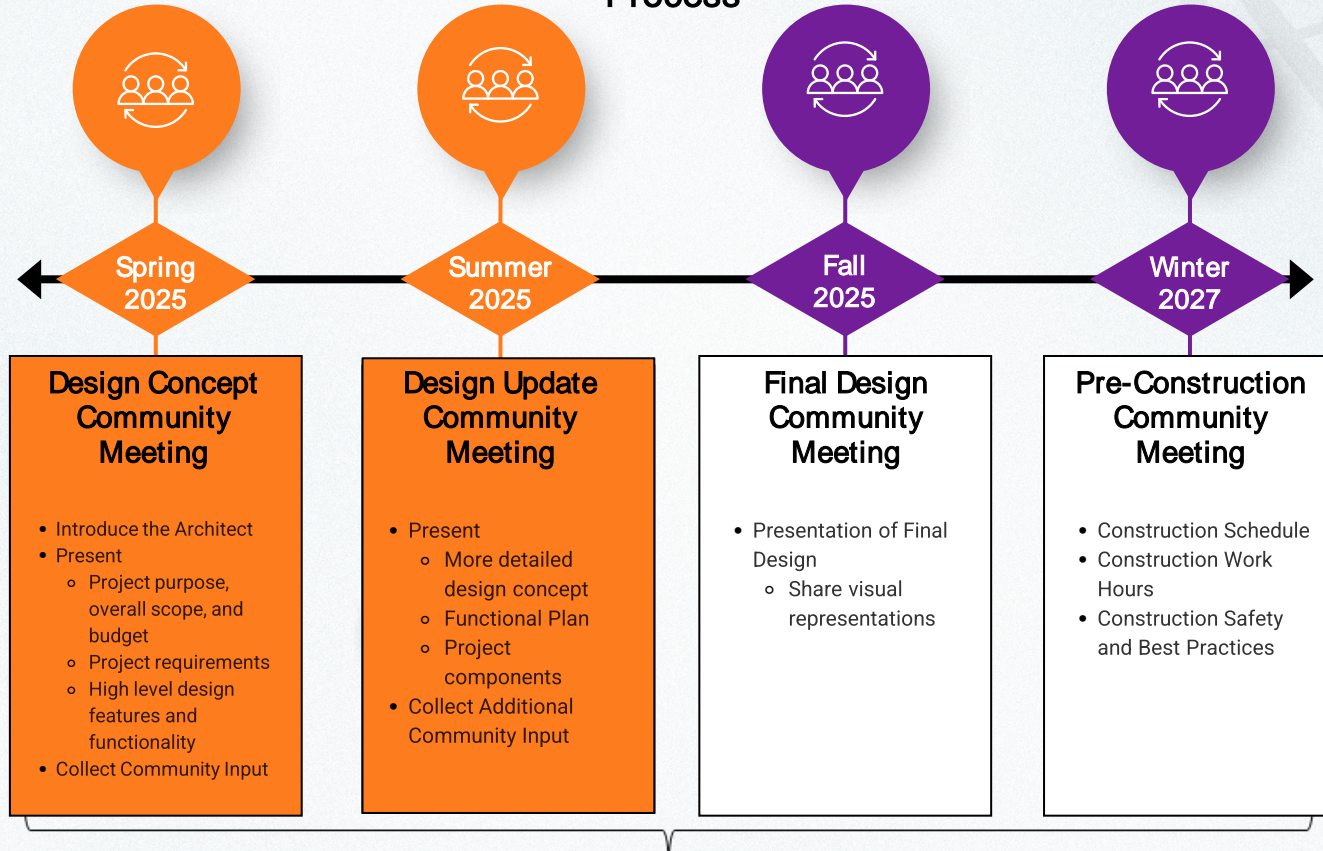


Literacy Garden & Outdoor Learning Environments (Adjacent to Kindergarten)



View of Assembly Area at MPR Stage (Social Hub in the distance)

FSD Community Relations Engagement Plan for the Design Process



Submit questions by
scanning the QR code.



FSD Community Relations Department: 213-241-1340

community.relations@laschools.org

<https://www.lausd.org/facilities/community-relations>

For unrelated construction project questions or concerns,
please email Region West Operations at:

FireRecoveryWest@lausd.net